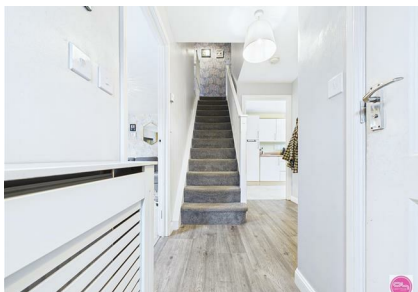


Hope Way, Church Gresley, Swadlincote, DE11 9BL

£240,000

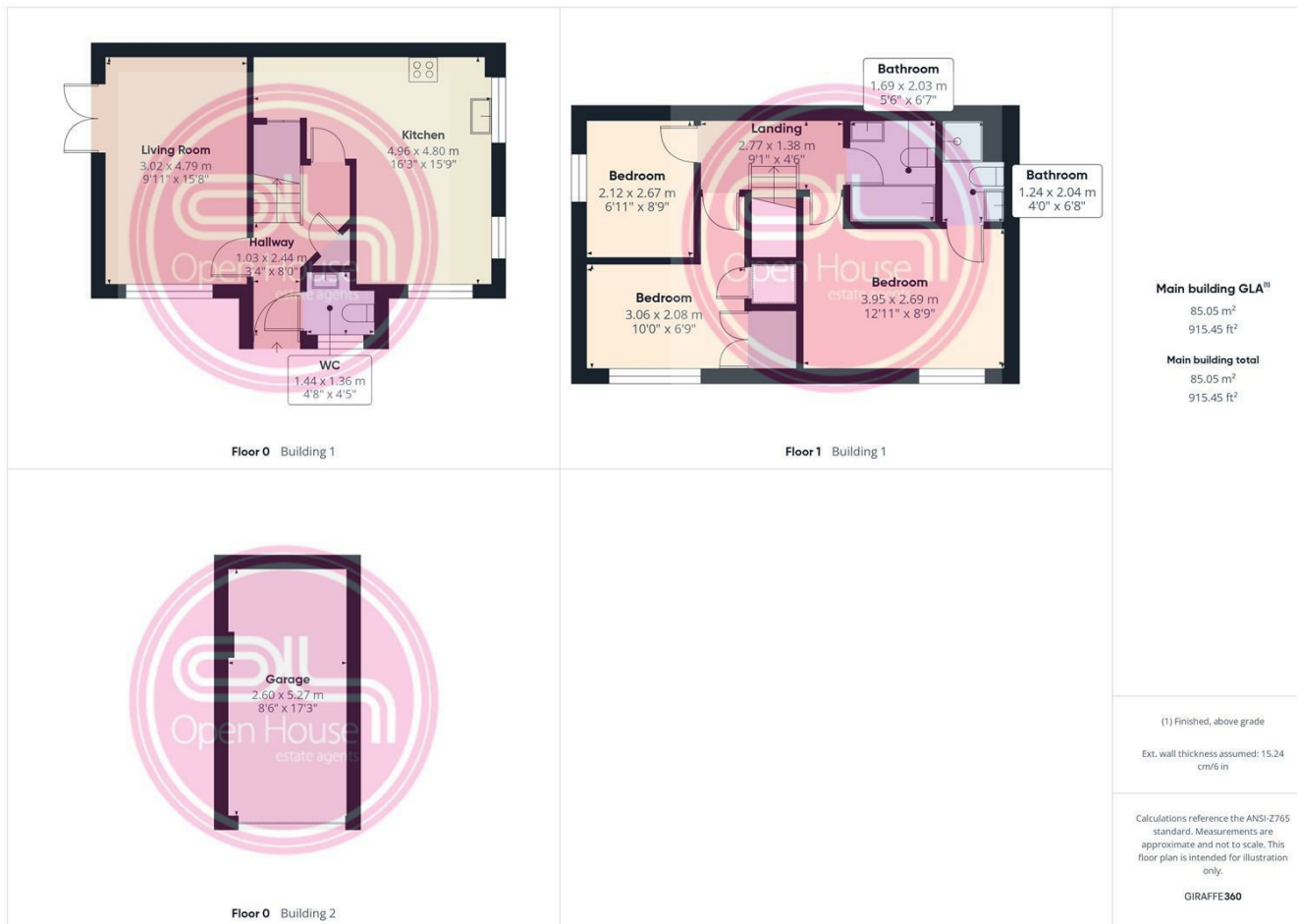
Council Tax Band: B



Located on Hope Way in the ever-popular Church Gresley development, this spacious three-bedroom home offers bright, modern living across two floors. With a superb open-plan kitchen/dining room, a generous lounge opening onto the garden, three good-sized bedrooms and two bathrooms upstairs, the property is ideal for family living. Externally, it benefits from a private rear garden, driveway parking and a single garage. Local shops, schools, green spaces and commuter routes are all within easy reach, making this a fantastic opportunity for a range of buyers.



Open House Burton & Swadlincote



Energy Efficiency Rating		
	Current	Potential
Very energy efficient - lower running costs		
(92 plus) A	95	95
(81-91) B		
(69-80) C		
(55-68) D		
(39-54) E		
(21-38) F		
(1-20) G		
Not energy efficient - higher running costs		
England & Wales	EU Directive 2002/91/EC	